



Jeddah City Overview 2024



About Our Company

Bringing our clients closer to their customers through creativity and innovation via the latest outdoor technologies.

From humble beginnings, our journey began in the early 1990's with the establishment of Saudi Signs Media (SSM) in Jeddah city.

Three decades on, Saudi Signs Media has become a leading Out-of-Home (OOH) advertising company regionally recognized by both local and international brands for its wide variety of digital and static products across the kingdom.

With the considerable changes in technology and growing brand needs, Saudi Signs Media is committed to providing the market with the latest advancement in out-of-home products and service levels required for business efficiency and success.

State of the art LED panels, premium locations, large creative canvases, and urban redesign serving the public's interest are a few of many attributes we provide the local market.



What We Stand For



Vision

Bring our clients closer to their customers through creativity and innovation via the latest outdoor technologies.



Mission

To become the region's outdoor advertising industry leader providing businesses with innovative solutions and products that inspire engagement and connectivity.



Values

Management and personnel are adamant practitioners of the values we hold dear.

- Integrity and ethical business practices
- Honesty and fairness to one another and partners
- Accountability for our actions
- Quality & Excellence from customer service and product offering
- Customer Centricity by delivering on all client requirements
- Progress and Drive to improve workflow efficiencies and all aspects of the business

Partnering With A Market Leader

Success built solely on a transactional relation is not the path we walk or encourage. It's the journey of long-term partnerships that we aspire too and have purposed our values.

Product Solutions

Our state-of-the-art selection of formats caters for all advertisers regardless of sector, budget, objective and time period.

Our People

The Saudi Signs family is proud to have a multi-cultural pool of talent with various skills providing invaluable input both internally and for our partners.

Driving Change

Applying industry standards and progressing the sector forward to accommodate current & future market needs is at the forefront of our investments.

Commitment to Service

Our team is incredibly committed to supporting any and all requirements ensuring client communication investments are executed in a manner beyond expectations.

Flexibility

Affording our partners flexibility in regard to placement, artwork rotation, planning and requirements is practiced ensuring successful Out-of-Home communication

Consistency

Is a non-negotiable performance quality that is given our undivided attention. It's a highly held priority helping ensure standards are met and improved.

Communication Needs Met

Whatever the communication requirement, our team will do its utmost to accommodate so to best support the successful launch and promotion of your brands campaign

Bespoke Distribution

Enjoy the ability to choose specific panel locations most suitable for your communication based on business insights.

Daypart Capability

Contextualize messaging helping it become more relatable to your audience by either day parting (mornings, afternoon, evening) or week-part (weekdays and weekends) methods.

Dynamic Creative

Utilize multiple ad copies with pre-agreed exposure times to fully communicate details about your brands promotion, service or identity.

Variety & Placement

From indoor to outdoor locations, digital to static, inner city or highways the variety and various placement of our products is both undeniably rich and diverse.





Market Presence

Jeddah

Leading the Kingdom in large and mid-sized formats designed to create impact, Jeddah's city landscape is providing advertisers with the latest quality formats ensuring exposure and solid brand presence.

Riyadh

The Kingdom's capital has become home to the richest digital format distribution networks providing incredible outdoor & indoor options guaranteed to make a mark and lasting impression on local consumers.

Greater Damman

Dammam, Khobar and Dhahran are home to a region that is now experiencing changes in the OOH offering by witnessing fast paced digital format adoption. No shortage of ongoing efforts to digitize the eastern province.

Rural Cities

Beyond the 3 main cities, Saudi Signs Media ensures presence for advertisers in Hail, Al Qurayyat and Arar.

Format Overview | Jeddah

Snapshot of formats and presence across the Kingdom of Saudi Arabia



OUTDOOR MEDIA

	Riyadh	Jeddah	Dammam	Al Qurayyat	Arar	Hail
Digital Bridge	●					
Digital Flagpole	●					
Static Flagpole	●					
Static Unipole		●	●			●
Digital Unipole		●	●			
Digital Steel Bridge		●				
Static Steel Bridge		●				
Digital LED Screens			●	●	●	

INDOOR MEDIA

Digital Gates	●	●	●			
Hyper Digital Solutions	●	●	●			

Jeddah



Jeddah Overview

A Brief Background

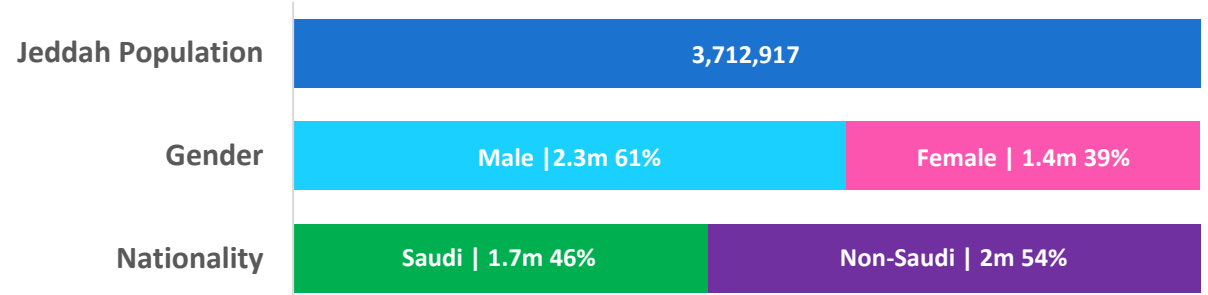
Jeddah is Saudi Arabia's second largest city after Riyadh, and the largest within the Makkah province. Located on the west coast of the Kingdom along the Red Sea, Jeddah serves as the country's gateway to Makkah welcoming millions of pilgrims each year.

Rich in history and a key commercial port, Jeddah is vibrant and multi-cultural with an array of offerings. Home to Saudia Airlines headquarters, the world's fastest Formula 1 track and King Abdullah Sport City Stadium the city hosts major company headquarters, a thriving SME environment and a diverse culinary experience.

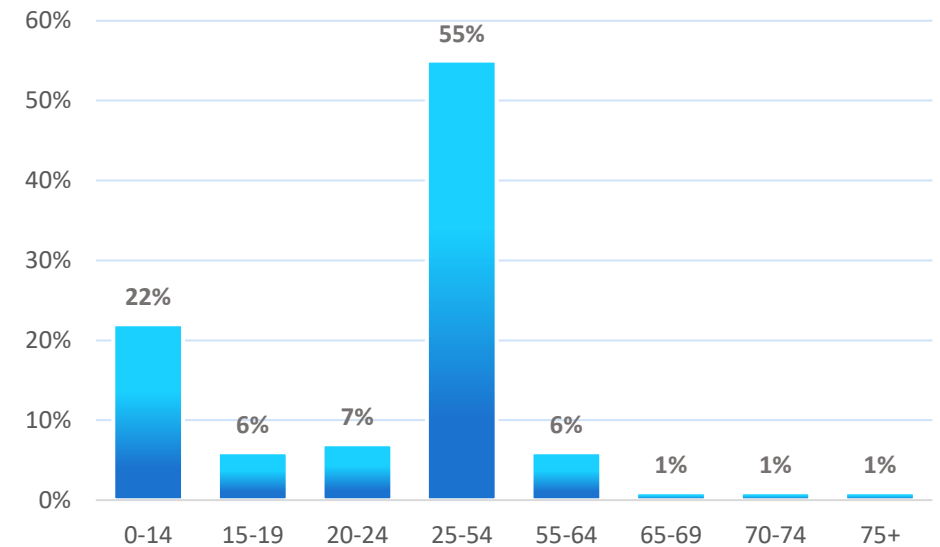
It's a point of origin for those wanting to visit King Abdullah Economic City (KAEC) and a pivotal hub for the Haramain High Speed Railway system helping connect Makkah, Jeddah city, King Abdulaziz International Airport, KAEC and Madina.

Major urban developments are underway in this linear city, whereby its largest and most utilized highways are situated in a North/South direction designed to lead motorists to any vicinity.

From an Out-of-Home advertising front, advertisers can choose from 4 different outdoor formats.



Total Population Age Breakdown





Digital Steel Bridges

Jeddah

12 Locations

24 Faces

Major City Roads

Digital

Circuit

[Map Here](#)

Static Steel Bridge

Jeddah

1 Location

2 Faces

Al Makarunah Street North Of Sultan Bin Salman Road

Static

Per Face

[Map Here](#)



Digital Unipole

Jeddah

4 Locations

7 Faces

Major and Main Road

Digital

Per Face

[Map Here](#)

Static Unipole

Jeddah

11 Locations

21 Faces

Major and Main City Roads

Static

Per Face

[Map Here](#)

Digital Steel Bridges

Jeddah

A market first and absolute showstopper, the **Digital Steel Bridges** out-of-home network across Jeddah is simply spectacular. Expanding the entire width of key highways and roads they are both attention demanding and stand out structures. With over +500m² of true LED space, these gigantic structures **jump-start conversation, raise awareness and create an overwhelming sense of legitimacy** in such a competitive environment..

Attributes:

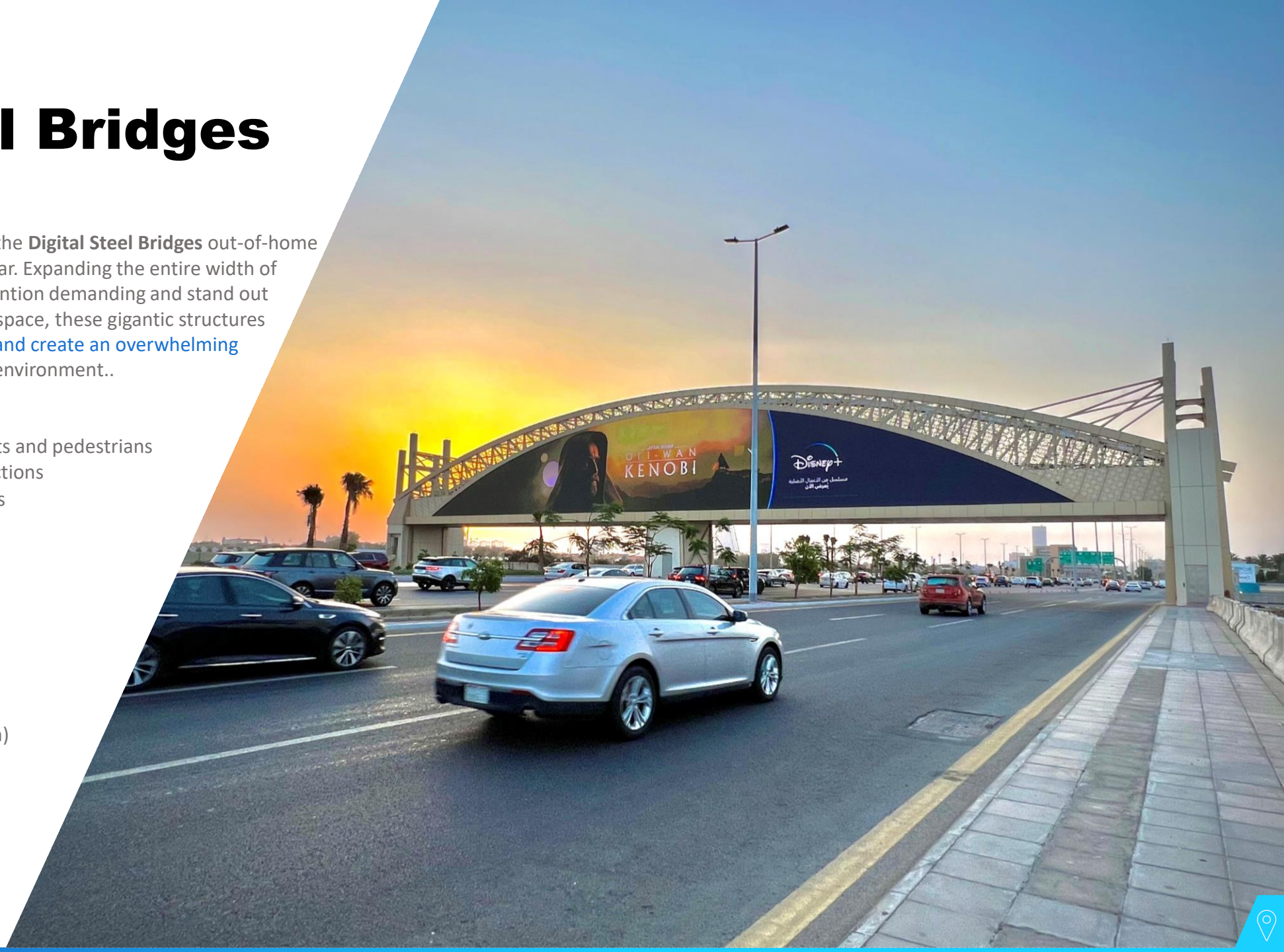
- Direct line of sight exposure to motorists and pedestrians
- Installed on high profile routes and junctions
- Accommodate advertising on both sides
- Serve as a safe pedestrian crossing
- Day-part messaging capable
- Static or animated artwork permitted

Exposure and Size:

- Booked as circuits (minimum 5 faces)
- 10 second ad per loop
- Operate for 20 hours per day
- Average panel size: 81 x 9 meters (w x h)

Inventory Quantity:

- 12 Locations
- 24 Faces



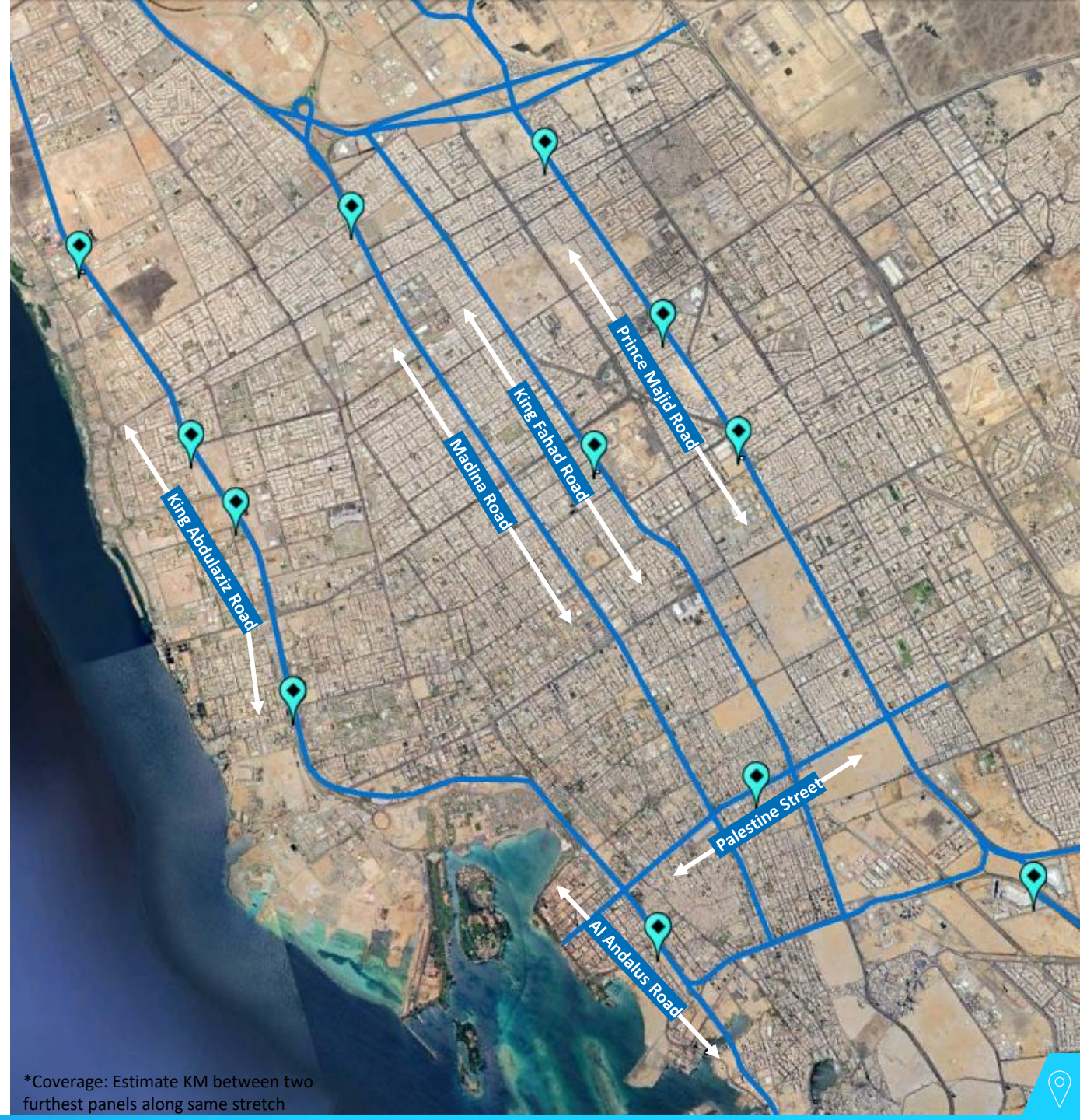
Digital Steel Bridges

Jeddah

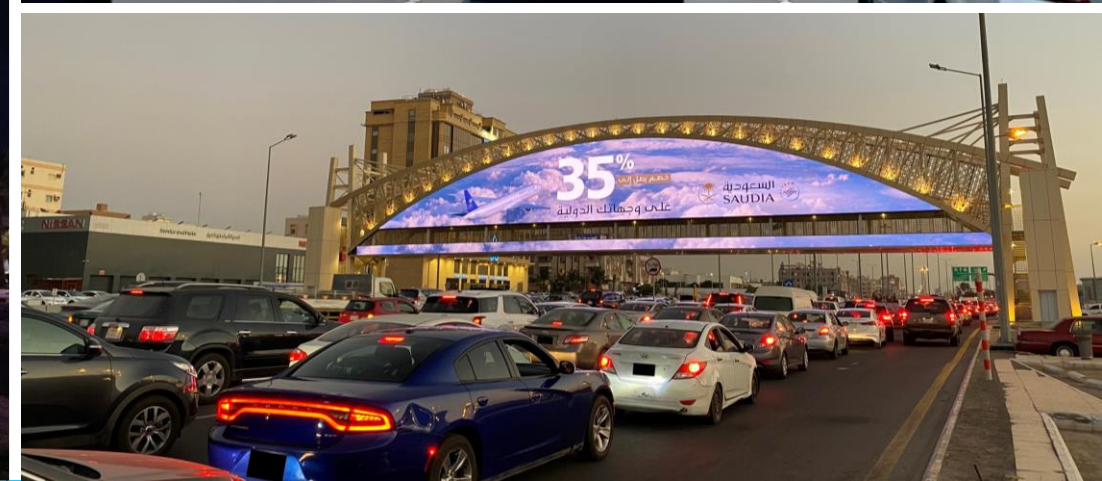
The regions largest and most impactful set of Digital Bridges that have transformed the urban landscape across Jeddah city.

Located along the busiest major highways which connect the north and south sides of the city, **Digital Steel Bridges** are the most **unique and inspiring** formats made available along the west coast city of Jeddah.

Locations	Quantity	Road	Direction	Coverage
4 Locations	8 Faces	King Abdulaziz Road	N/S	~7.7km
4 Locations	8 Faces	Prince Majid Road	N/S	~13.6km
1 Location	2 Faces	Madinah Road	N/S	-
1 Location	2 Faces	King Fahad Road	N/S	-
1 Location	2 Faces	Al Andalus Road	N/S	-
1 Location	2 Face	Palestine Street	E/W	~
12 Locations	24 Faces	6 Roads		



*Coverage: Estimate KM between two furthest panels along same stretch



أرمني جوعك على
أقرب شبك ماكدونالدز

نقطة في خدمة طلبات السيارات



SAB



Digital Bridges

**Largest Digital Bridges
Available within The Region**

**Strategically Located & Found
Opposite Key Points of
Interest**

**Incredibly Rich
Resolution & Clarity**

**Visible from Vast Distances
& All Service Roads**

Static Steel Bridge

Jeddah

Static formats have become a rarity within the borders of major cities, however an exception has been made for this **Static Steel Bridge**. Designed for brands seeking **long term exposure and/or 100% share of voice**, this newly installed pedestrian bridge is made available within Jeddah's northern neighborhood of An Nuzhah along Al Makarunah Street.

Attributes:

- Direct line of sight exposure to motorists and pedestrians
- Installed on high profile route
- Accommodates advertising on both sides (north/south)
- Serves as a safe pedestrian crossing
- Static artwork only

Exposure and Size:

- Booked individually
- 100% share of voice
- Front lit
- Visible 24/7

Inventory Quantity:

- 1 Location
- 2 Faces



Static Steel Bridge

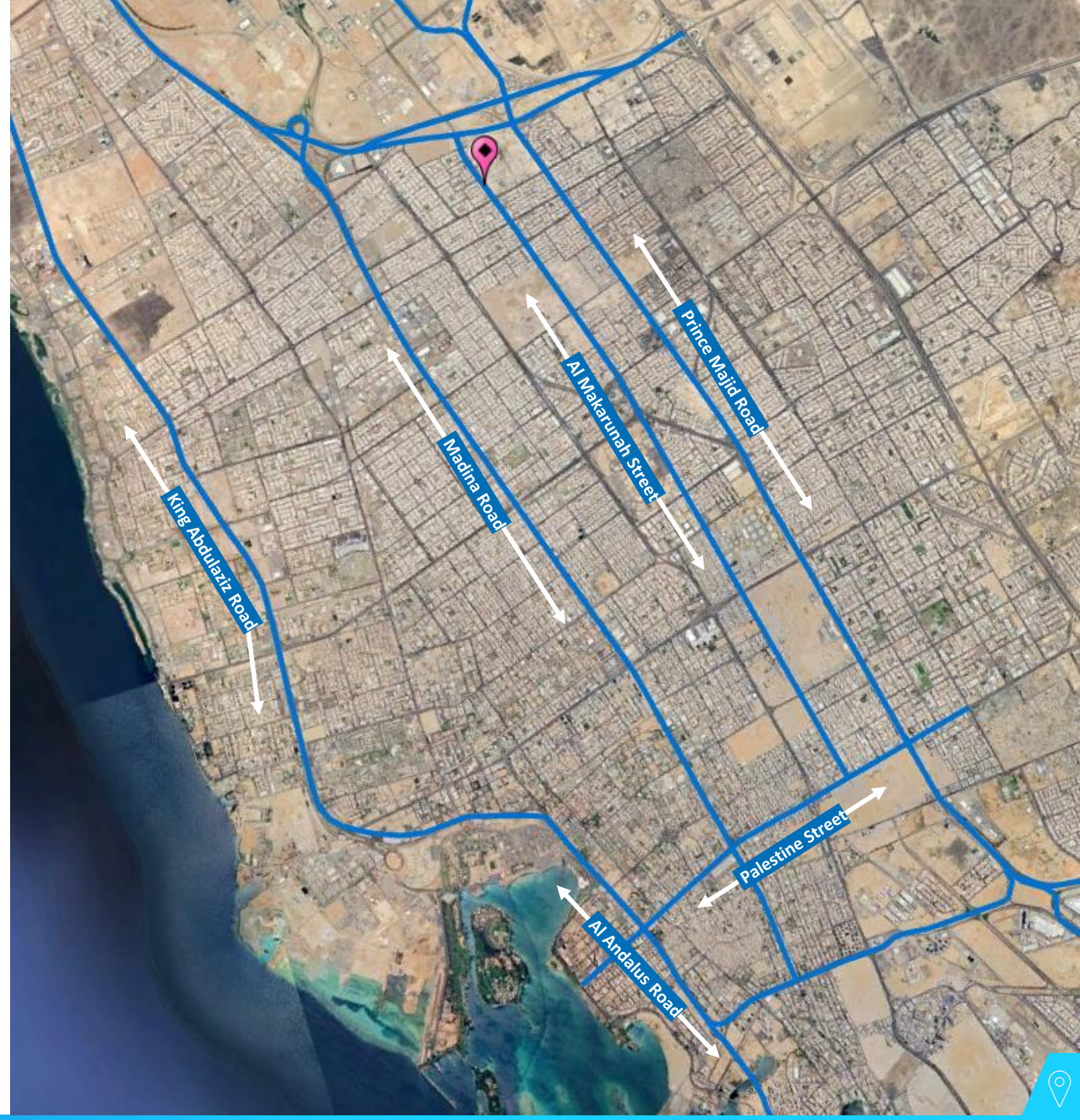
Jeddah

Jeddah's largest Static format Bridge available in a vicinity that lacks any outdoor formats.

Situated at the northern end of the city, this road helps connect motorists to nearby residential neighborhoods and adjacent roads.

Al Makarunah Street also leads to Al Nouzhah service road to/from new King Abdulaziz International Airport.

Locations	Quantity	Road	Direction	Coverage
1 Locations	2 Faces	Al Makarunah Street	N/S	-
1 Location	2 Faces	1 Road		



Digital Unipoles

Jeddah

Digital Unipoles are the newest version of the long serving static format that has adopted the technological change to best serve advertisers. Similar to others of digital nature, it **affords brands flexibility** in terms of dynamic creative capabilities, enriching visualization of the product and helps support communication in areas that experience high traffic. Utilized for both **branding and tactical campaigns**, these structures are a common sight in key metropolitan areas.

Attributes:

- Installed along inner city roads and inter-city highways
- Located along high traffic stretches and key junctions
- Found opposite major commercial centers and residential vicinity entrances
- Capable of supporting special executions

Exposure and Size:

- Booked individually (per face)
- 10 second exposure
- Operate for 20 hours per day
- Average panel size: 14.65 x 4.27 meters (w x h)

Inventory Quantity:

- 4 Locations
- 7 Faces



Digital Unipoles

Jeddah

Installed along three main roads, Digital Unipoles in Jeddah help support a brand reaffirm its campaigns message.

Madina Road panels are located on the northwards moving traffic direction

Locations	Quantity	Road	Coverage
2 Locations	4 Faces	Madina Road	~5.2km
1 Location	2 Face	Prince Sultan Road	~
1 Location	1 Face (A)	Sari Road	~
4 Locations	7 Faces	3 Roads	



*Coverage: Estimate KM between two furthest panels along same stretch





Digital Unipoles

Located on a High Traffic Road & Inner-City Intersection

Great for Supporting Major Campaigns

Clearly Visible From Both Sides of Traffic (A+B)

Located Along Stretches With Limited Large Formats

Static Unipoles

Jeddah

The industry's longest-serving format made available to advertisers and have supported brands throughout the years to build equity across the kingdom. Their elevated heights and long-term locations are ideally positioned to **capture attention from all directions** within major cities and inter-city routes. They affirmatively remind and connect with audiences ensuring repeated awareness throughout the reserved period.

Attributes:

- Installed along inner city roads and inter-city highways
- Located along high traffic stretches and key junctions
- Found opposite major commercial centers and residential vicinity entrances
- Capable of supporting special executions

Exposure and Size:

- Booked individually (per face)
- 100% share of voice
- Back lit / Front lit and visible 24/7
- Average panel size: 14.65 x 4.27 meters (w x h)

Inventory Quantity:

- 11 Locations
- 21 Faces



Static Unipoles

Jeddah

Predominantly installed along the southern route leading motorists to and from Makkah, the Static Unipoles capture attention of motorists along said roads which have very limited out-of-home options for advertisers. These highways are utilized by commuting residents as well as pilgrims visiting and leaving the Holy city of Makkah.

Additionally, available Unipoles are located on Sari Road x Prince Sultan Road as well as Madina Road (south).

Locations	Quantity	Road	Coverage
9 Locations	18 Faces	Makkah Road	~25km
1 Location	2 Faces	Madina Road	-
1 Location	1 Face (B)	Sari Road	-
11 Locations	21 Faces	3 Roads	



*Coverage: Estimate KM between two furthest panels along same stretch



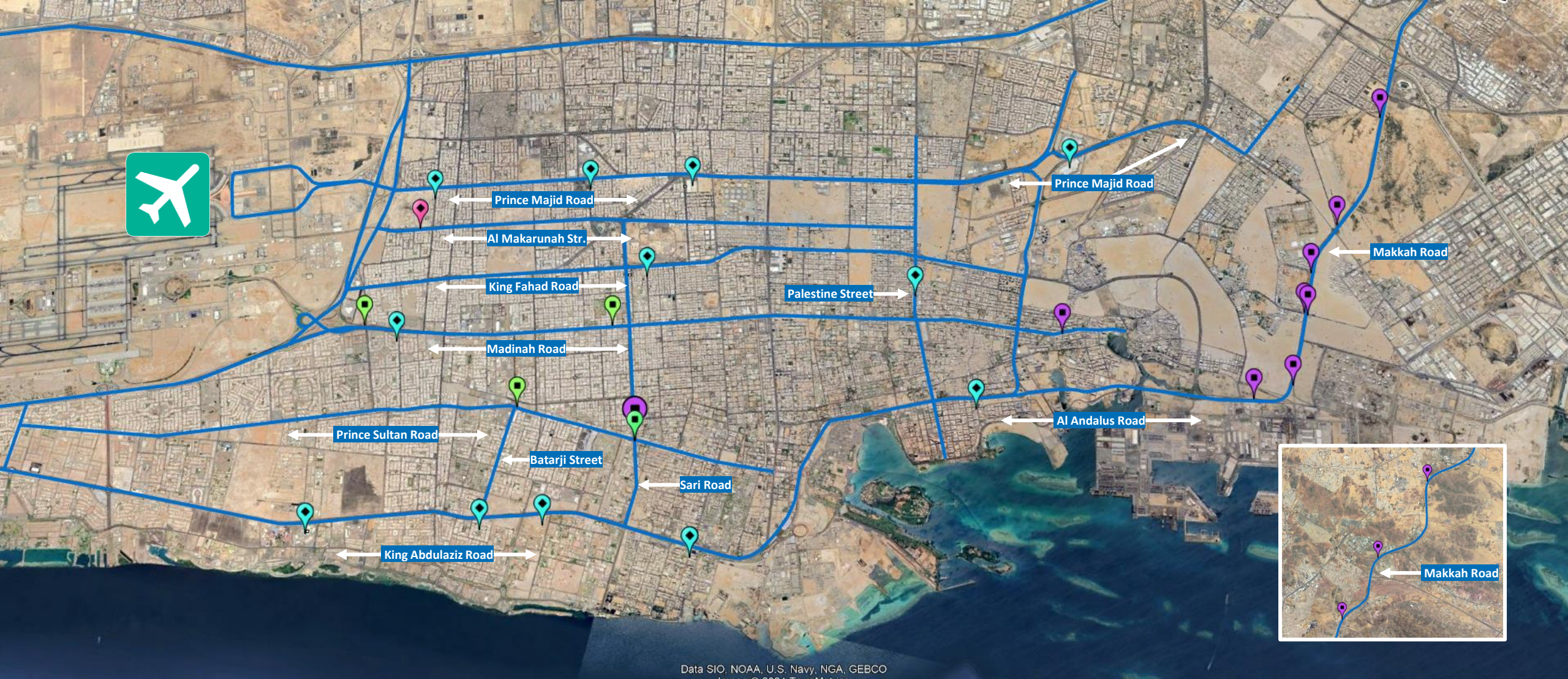
Static Unipoles

Enjoy 100%
Share of Voice

Back Lit & front Lit in Nature
Depending on Location

Captures All Incoming &
Outgoing Traffic Towards
Makkah

Utilized For Branding
& Long-Term Presence



Jeddah Outdoor Distribution

-  Digital Steel Bridges
-  Static Steel Bridge
-  Digital Unipoles
-  Static Unipoles

Indoor Media





Digital Gates

Jeddah

9 Location

9 Faces

Digital

Per Circuit

[Map Here](#)

Hyper Digital Solution

Jeddah

25 Location

426 Screens

Digital

Per Circuit

[Map Here](#)

Digital Gates

Jeddah

The premium choice for **first point of contact** with shoppers helping commence the product consideration process in the right environment. **Digital Gates** are the Kingdom's latest format intended to heighten standards for brands seeking a sense of uniqueness and undisputed presence within a supermarket setting.

Attributes:

- Allows for an unmissable statement before becoming exposed to a broad variety of goods
- Supports promotions, time limited offers, cultural/seasonal messages
- Enables creative artistry and day parting messages
- Situated at bottleneck of shopper journey
- Seen and recognized from a distance

Exposure and Size:

- 10 second ad exposure
- Operate for 16+ hours subject to location
- Average Gate size: 4 x 3.5 meters (w x h)

Jeddah Quantity:

- 9 Locations
- 9 Faces



Digital Gates

Jeddah

Situated at the commencement of a **shopper's path-to-purchase journey**, giving your brand a unique opportunity to instill product consideration in a decisive environment.

Digital Gates can be found in the following locations:

#	City	Supermarket	Location	Location Links
1	Riyadh	Danube	Al Hayat Mall	Map Link
2	Riyadh	Danube	Nakhla Mall	Map Link
3	Riyadh	Danube	Al Thummama	Map Link
4	Riyadh	Danube	Panorama Mall	Map Link
5	Riyadh	Panda	Al Takhassousi Street	Map Link
6	Riyadh	Panda	Abi Bakr As Siddiq	Map Link
7	Riyadh	Panda	Alia Plaza	Map Link
8	Riyadh	Panda	Salam Mall	Map Link
9	Riyadh	Panda	Masharif Hills	Map Link
10	Jeddah	Danube	Al Salaam Mall	Map Link
11	Jeddah	Danube	Red Sea Mall	Map Link
12	Jeddah	Danube	Tahlia 2	Map Link
13	Jeddah	Danube	Al Sairfe Mall	Map Link
14	Jeddah	Panda	Al Marwah	Map Link
15	Jeddah	Panda	Sari	Map Link



#	City	Supermarket	Location	Location Links
16	Jeddah	Panda	Mall of Arabia	Map Link
17	Jeddah	Panda	Al Samer	Map Link
18	Jeddah	Panda	Safa Mall	Map Link
19	Khobar	Danube	Al Jumah City Center	Map Link
20	Khobar	Danube	Aziziyah	Map Link
21	Dammam	Danube	Al Shatee	Map Link
22	Dammam	Danube	Ar Rakah	Map Link

9 Jeddah Supermarkets



Hyper Digital Solutions

Jeddah

Hyper Digital Solutions (HDS) are portrait orientated screens consecutively installed above cashier counters of major supermarket chains across the 3 main cities of Riyadh, Jeddah and Greater Dammam.

As shoppers spend significant amount of time browsing aisles and in queue at checkouts, it affords brands a unique opportunity to communicate. Located at the **moment of truth**, it helps brands take advantage of impulse buys and reminders.

Attributes:

- Consecutive installment of panels ensuring opportunity to see
- Synchronized delivery of message for heightened impact
- Day-part messaging capable
- Localized targeting capable
- Accommodates 2 faces per panel (A+B)
- Static or animated artwork permitted

Exposure and Size:

- 10 second ad exposure
- Operate for 16+ hours subject to location
- Panel size: 0.9 x 1.6 meters (w x h)

Jeddah Quantity:

- 25 Locations
- 426 Screens



Hyper Digital Solutions

Jeddah

Hyper Digital Solutions can be found across the 3 main cities at:



Format Recap | Jeddah

With a large variety of formats made available, Saudi Signs Media can accommodate any communication objective, duration, budget and requirement required for a successful campaign.



OUTDOOR MEDIA

	Riyadh	Jeddah	Dammam	Al Qurayyat	Arar	Hail
Digital Bridge	●					
Digital Flagpole	●					
Static Flagpole	●					
Static Unipole		●	●			●
Digital Unipole		●	●			
Digital Steel Bridge		●				
Static Steel Bridge		●				
Digital LED Screens			●	●	●	

INDOOR MEDIA

Digital Gates	●	●	●			
Hyper Digital Solutions	●	●	●			

Thank You



5th Floor, Lotus Building,
Prince Sultan Road, Al Zahra District,
Jeddah 23425, Kingdom of Saudi Arabia
920022565

info@saudisignsm.com

